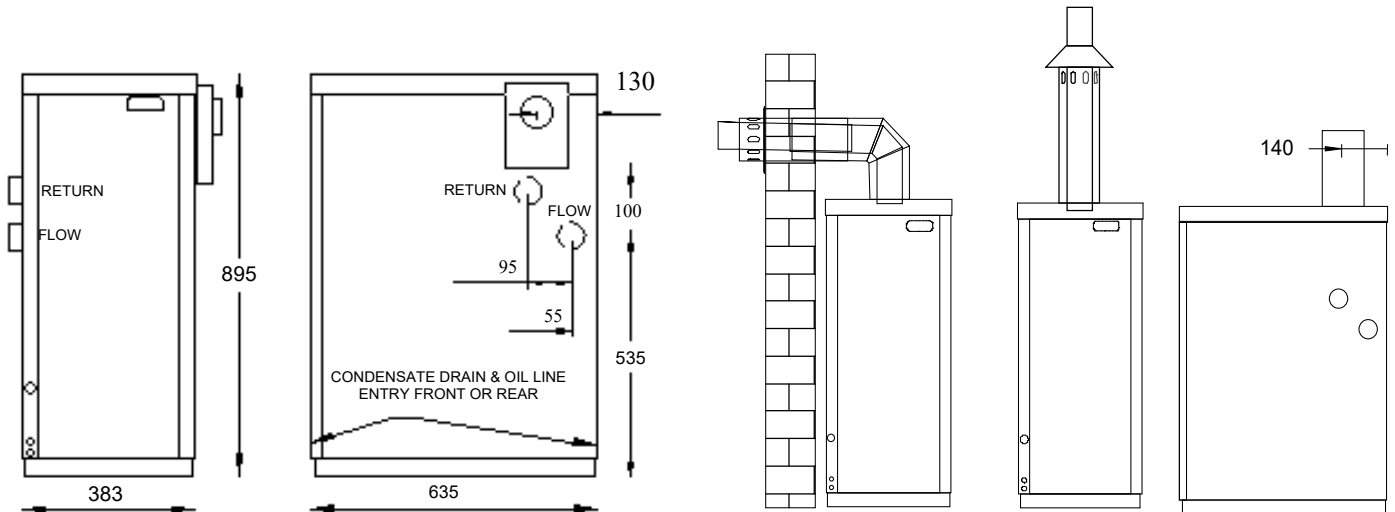


## Hounsfield External Floor Standing Model - Quick installation



**Low level outlet options Right side (standard), Left side (option)**

**Alternative balanced flue options**

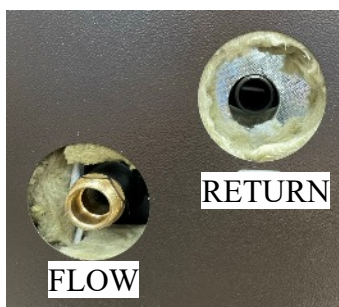
### **Balanced flue**

The Tuscan External boiler is unique for an external boiler in having a true “balanced flue” system, thereby maintaining clean and efficient combustion whatever prevailing site or wind conditions may be.

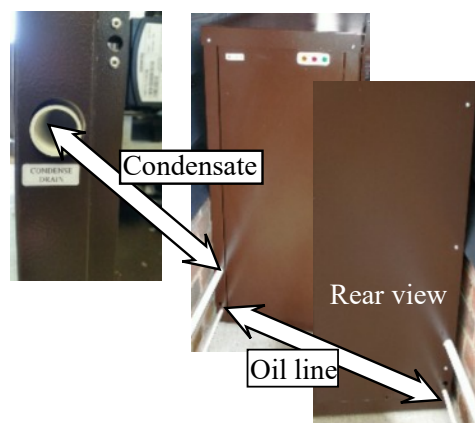
**Unpacking the boiler** - Remove four stainless base adjustment bolts securing boiler into the pallet.

### **Water connections.**

Recommendation - seal condensate pipe work with Rectorseal Tru-blu, a non-setting sealant it doesn't dry out like



Flow & return connections.  
(fittings included)



Condensate pipe, oil line and fire valve  
front or rear entry options.



Condensate trap stays in situ for boiler service.

### Condensate drainage.

OPTION

Condensate soak away kit including lime stone Chippings (Pt. no. RP024)



RECOMMENDATION

Seal condensate pipe work with Rectorseal Tru-blu, a non-setting sealant that doesn't dry out like glue and remains easy to dismantle, it's also suitable for oil line connections.

### Electrical connection

Plug & socket connection for mains power and burner.



A permanent live supply is required for the frost thermostat.

### Fuel supply

IMPORTANT:

Tuscan boilers utilise a single pipe suction lift fuel supply system; it's essential to keep the number of joints between the oil tank and the burner to a minimum, use pipe benders rather than fittings.

Note. One of the advantages of the ELCO burner and pump configuration we use is that, unlike a Riello burner where sometimes a deaerator like the Tigerloop is essential they are **absolutely not required** with a Hounsfield Boiler; they will of course "mask" faults with the fuel supply system, acting as a "plaster", better to resolve the problem; deaerator's have their own inherent problems.



Fire valve, filter and Isolation valve supplied pre-assembled.

### Flue options



Low level balanced



High level & vertical flue connection.

### Regulations

IMPORTANT:

Boiler installation must comply with Building Regulations, associated E.N. / British Standards and industry good practice. Installation of a magnetic system filter forms part of this compliance.

