



# Hounsfield Boilers

Domestic **Oil** Fired Boilers

From the same stable as Electro-oil, B9 and Sterling burners a unique product....

- ✓ *Designed for condensing technology....* other manufacturers have modified existing product with inevitable compromise.
- ✓ *Meets 2018 legislation changes....* for NO<sub>x</sub> emissions there's no need for untested and expensive "Blue Flame" technology!
- ✓ *Ease of maintenance....* loosen one cap screw to remove the combustion head; provides the ultimate in access for servicing. No other burner provides such easy access to the fan for removing animal hair and dust!
- ✓ *Spare parts....* **one** burner model for 12-45 kW, **one** set of spares; many of which are common to B9 and Sterling burners, so you hold less stock.
- ✓ *Remotely mounted oil pump....* alleviates heat transfer and bearing failure problems associated with oil pumps directly mounted onto the motor.
- ✓ *Air intake adjustment....* with a wide range of adjustment setting the air intake is easy and not "over sensitive". A "steel" cap screw provides adjustment it's not going to wear or split like those plastic ones!
- ✓ *Industry standard components....* means there's no cartel on spares pricing - providing your customer with low "life time" maintenance costs.
- ✓ *Suction lift pump....* means a single pipe oil supply system is utilised, a deaerator such as a Tigerloop isn't required so there are no associated life time maintenance costs for your customer!

*Bentone's BF1 burner complements the "keep it simple" philosophy of Tuscan boilers.*



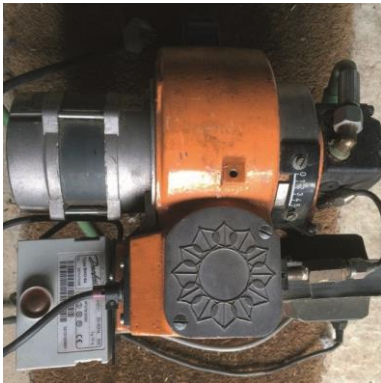
View the the BF1 on our You Tube video:

<http://hounsfieldboilers.co.uk/technical-help/videos>

Bentone is a subsidiary of Nu-Way Burners, a British Company established in 1948.

Bentone burners were sold under licence in the UK via EOGB until circa 10 years ago; EOGB perhaps a better known brand name in the domestic boiler industry.

Below some familiar, old design Bentone burners:



Electro-Oil, International range



B9 Range



Sterling range