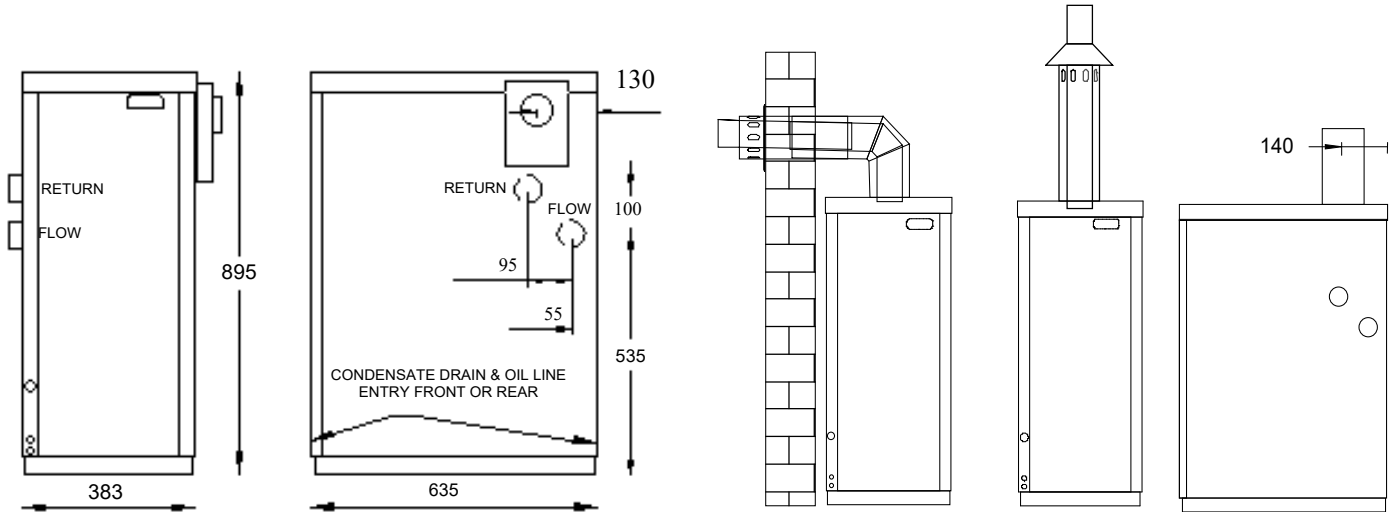


Hounsfield External Floor Standing Model - Quick installation



Low level outlet options Right side (standard), Left side (option)

Alternative balanced flue options

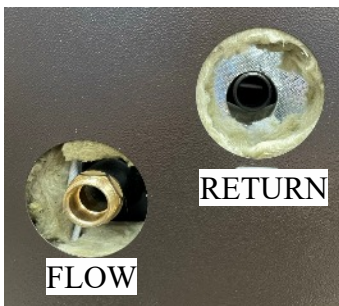
Balanced flue

The Tuscan External boiler is unique for an external boiler in having a true “balanced flue” system, thereby maintaining clean and efficient combustion whatever prevailing site or wind conditions may be.

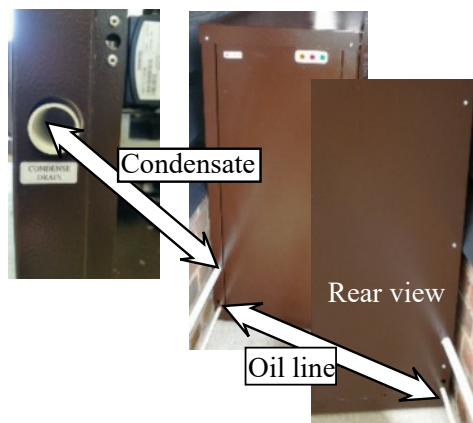
Unpacking the boiler - Remove four stainless base adjustment bolts securing boiler into the pallet.

Water connections.

Recommendation - seal condensate pipe work with Rectorseal Tru-blu, a non-setting sealant it doesn't dry out like



Flow & return connections.
(fittings included)



Condensate pipe, oil line and fire valve front or rear entry options.



Condensate trap stays in situ for boiler service.

Condensate drainage.

OPTION

Condensate soak away kit including lime stone Chippings (Pt. no. RP024)



RECOMMENDATION

Seal condensate pipe work with Rectorseal Tru-blu, a non-setting sealant that doesn't dry out like glue and remains easy to dismantle, it's also suitable for oil line connections.

Electrical connection

Plug & socket connection for mains power and burner.



A permanent live supply is required for the frost thermostat.

Fuel supply

IMPORTANT:

Tuscan boilers utilise a single pipe suction lift fuel supply system; it's essential to keep the number of joints between the oil tank and the burner to a minimum, use pipe benders rather than fittings.

Note. One of the advantages of the ELCO burner and pump configuration we use is that, unlike a Riello burner where sometimes a deaerator like the Tigerloop is essential they are **absolutely not required** with a Hounsfield Boiler; they will of course "mask" faults with the fuel supply system, acting as a "plaster", better to resolve the problem; deaerator's have their own inherent problems.



Fire valve, filter and Isolation valve supplied pre-assembled.

Flue options



Low level balanced



High level & vertical flue connection.

Regulations

IMPORTANT:

Boiler installation must comply with Building Regulations, associated E.N. / British Standards and industry good practice. Installation of a magnetic system filter forms part of this compliance.

