



## Tuscan 12/19 Internal wall mounted Quick installation guide

### Unpacking the boiler

- Remove:
- front cover - loosen four retaining screws.
  - burner assembly
  - heat exchanger assembly

### Mounting the wall plate

Wall plate fitting kit includes a 10 mm masonry drill and seven Rawl plugs.

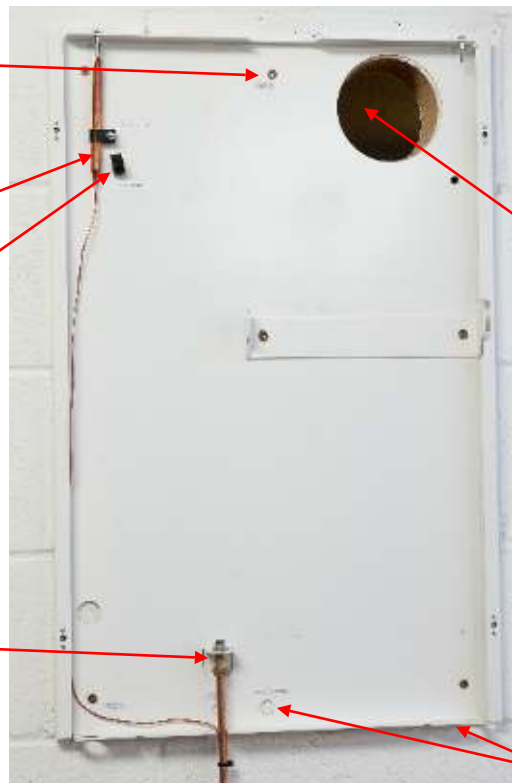
Drill & fit Rawl plug in this position first, check and adjust wall plate for square.

Fire valve clip

Air duct support

**IMPORTANT - ALLOW 100 MM CLEARANCE TO LEFT SIDE OF CASING FOR SERVICE ACCESS**

Pre-assembled bulkhead fitting.



For horizontal flue installation drill circa 127 mm hole for flue

Electric cable entry points

### Electrical connection

Plug & socket connections for mains power and burner.

**OPTION**

A control panel with an integral frost thermostat for garage installations. Pt. No. EL20008



## Fitting the heat exchanger.

### **IMPORTANT:**

Fit the short section of copper pipe to the flow connection before lifting the heat exchanger into position.

## Condensate drainage.

Condensate trap supplied, to be installed remotely.

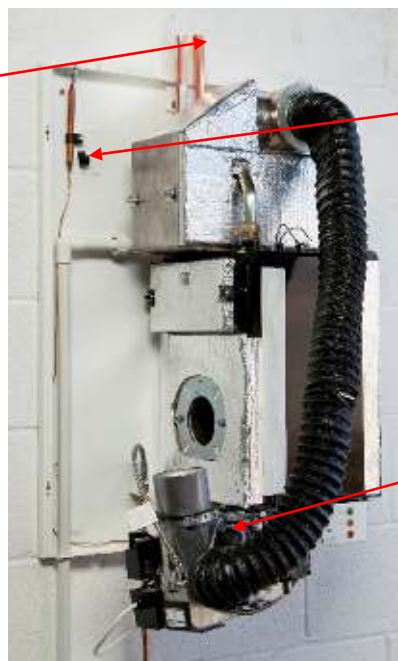
### **OPTION**

Condensate soak away kit including lime stone Chippings  
(Pt. no. RP024)



### **RECOMMENDATION**

Seal condensate pipe work with Rectorseal Tru-blu, a non-setting sealant that doesn't dry out like glue and remains easy to dismantle, it's also suitable for oil line connections.  
(Pt.no. CON-TRU-BLUE)



## Fuel supply

### **IMPORTANT:**

Tuscan boilers utilise a single pipe suction lift fuel supply system; it's essential to keep the number of joints between the oil tank and the burner to a minimum, use pipe benders rather than fittings. We've supplied additional fittings to be used only if required.

Note. One of the advantages of the Bentone BF1 and pump configuration we use is that unlike a Riello burner where sometimes a deaerator like the Tigerloop is essential they are **absolutely not required** with a Tuscan Boiler; they will of course act as a "plaster" masking faults with the fuel supply system. Better to resolve the problem; deaerator's have their own inherent problems.

