

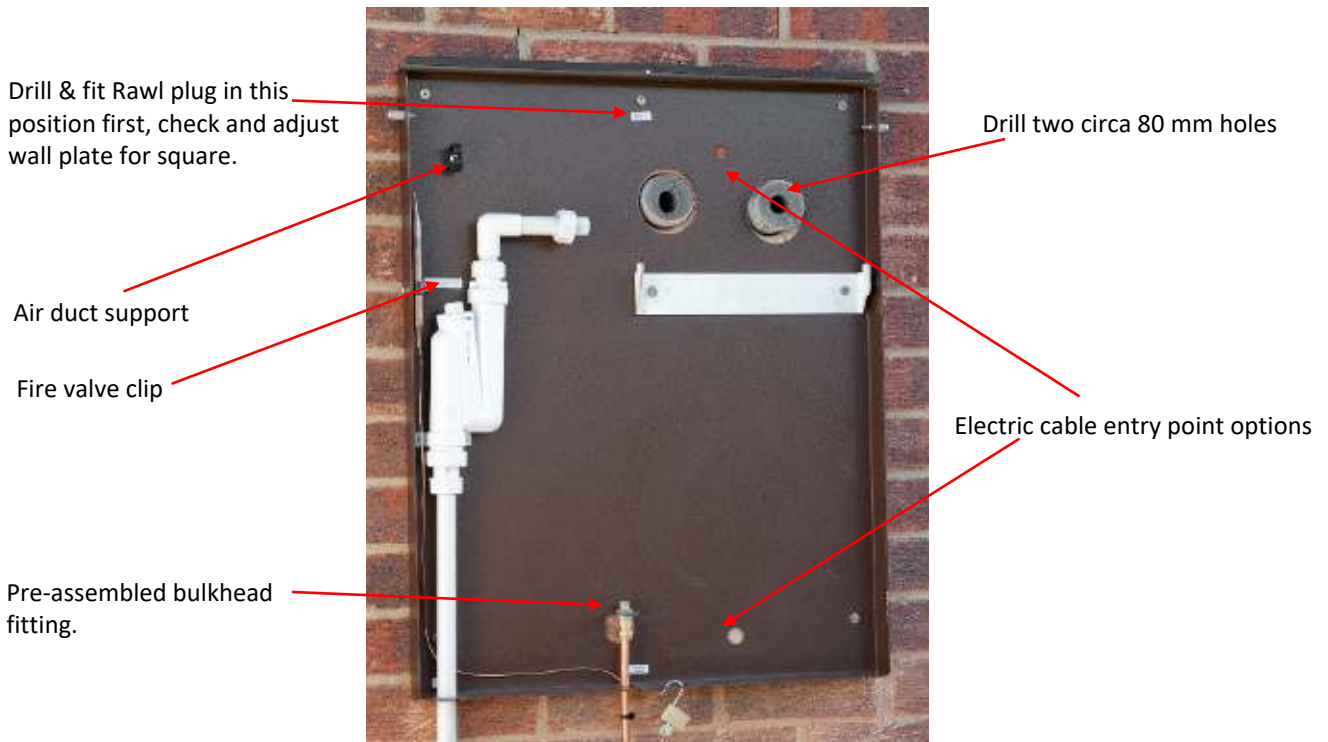
Tuscan 12/19 External Wall Mounted Boiler - Quick installation guide

Unpacking the boiler

- Remove:
- front cover - loosen two cap screws.
 - burner assembly
 - heat exchanger assembly

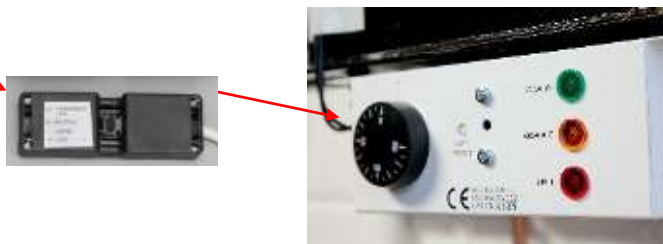
Mounting the wall plate

Wall plate fitting kit includes a 10 mm masonry drill and seven Rawl plugs.



Electrical connection

Plug & socket connections for mains power and burner.
Permanent live supply required for frost thermostat.



Fitting the heat exchanger.

Lift the heat exchanger assembly into position

Condensate drainage.

Condensate trap supplied, to be installed remotely.

OPTION

Condensate soak away kit including lime stone Chippings
(Pt. no. RP024)



RECOMMENDATION

Seal condensate pipe work with Rectorseal Tru-blu, a non-setting sealant that doesn't dry out like glue and remains easy to dismantle, it's also suitable for oil line connections.
(Pt.no. CON-TRU-BLUE)



Burner service position

Fit one-piece cover



Fit flue terminal



Fuel supply

IMPORTANT:

Tuscan boilers utilise a single pipe suction lift fuel supply system; it's essential to keep the number of joints between the oil tank and the burner to a minimum, use pipe benders rather than fittings. We've supplied additional fittings to be used only if required.

Note. One of the advantages of the Bentone BF1 and pump configuration we use is that unlike a Riello burner where sometimes a deaerator like the Tigerloop is essential they are **absolutely not required** with a Tuscan Boiler; they will of course act as a "plaster" masking faults with the fuel supply system. Better to resolve the problem; deaerator's have their own inherent problems.

Fire valve, NRV, filter and Isolation valve supplied pre-assembled.

